

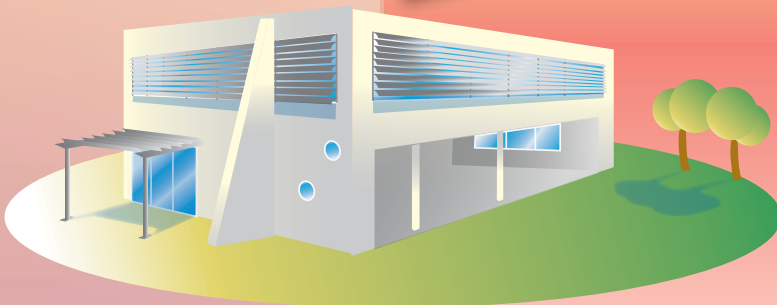
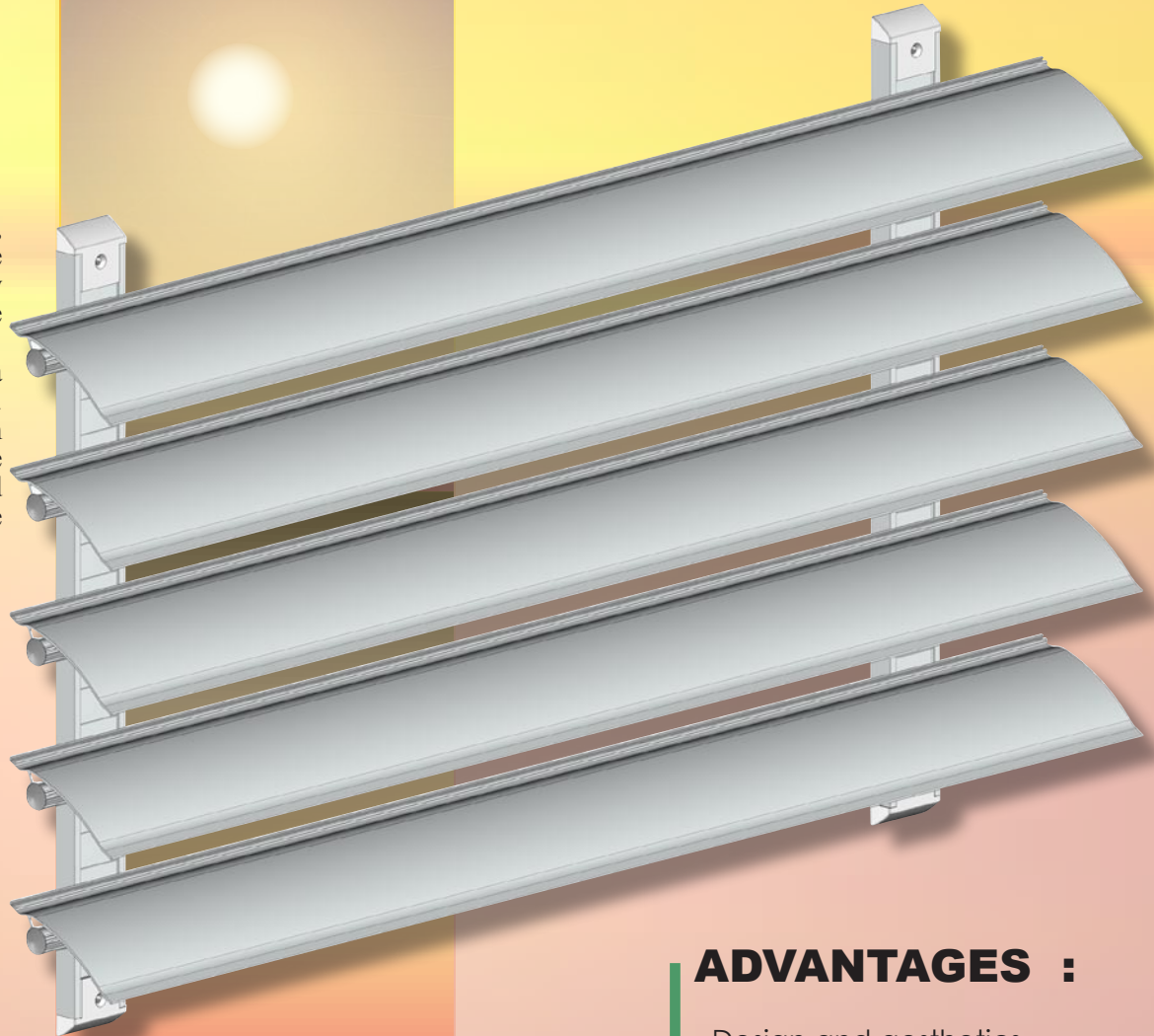
info

MITJAVILA

**SUN BREAKERS
BSOFF 135**

**Sun protection
New generation**

The global warming, greenhouse effect, the sun's rays as many elements that can become uncomfortable. Glazed windows bring a direct contact with outside. An exterior sun protection limits consequently the sun's impact on glazed windows: luminosity & the sun's rays.

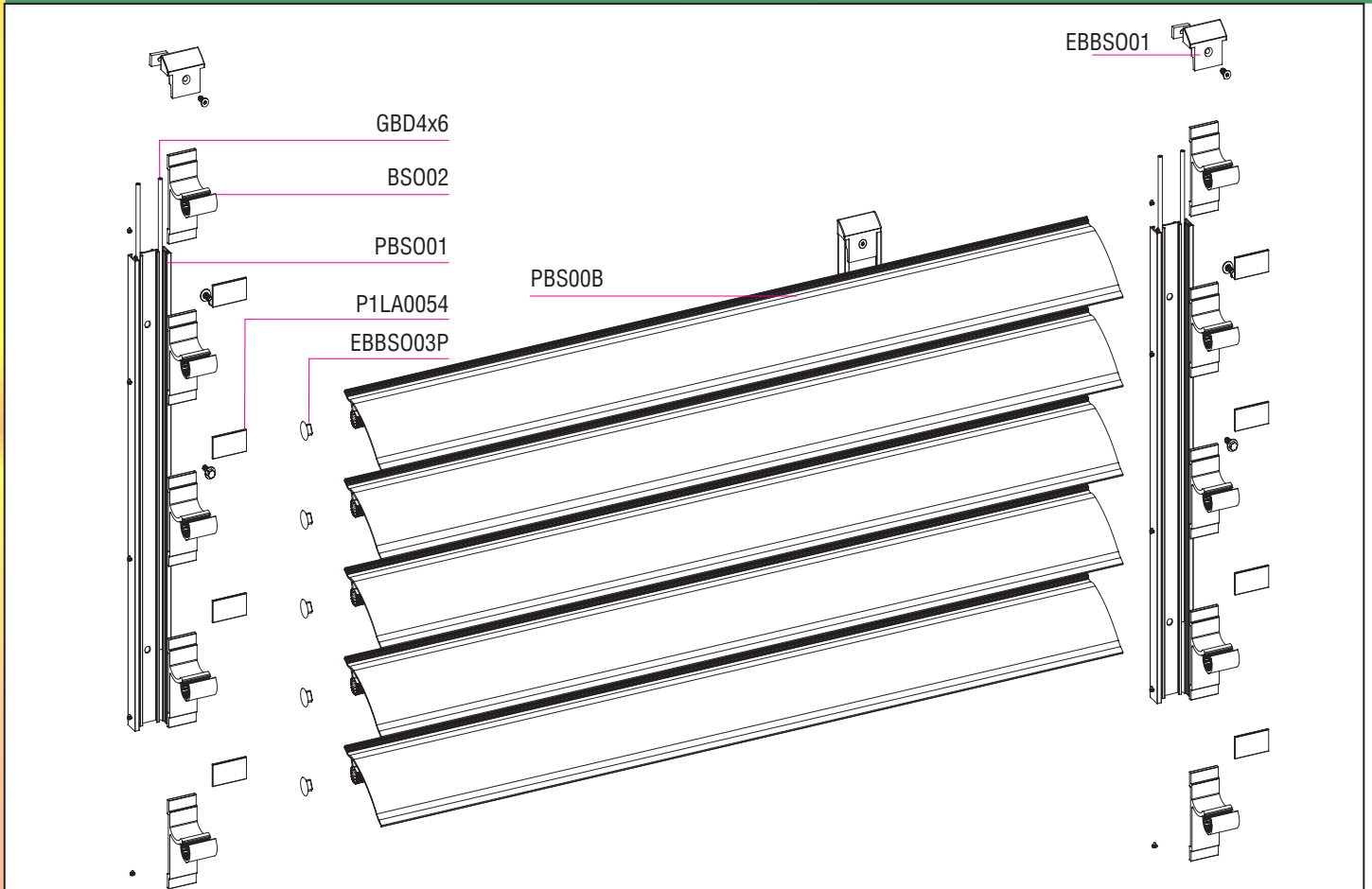


ADVANTAGES :

- Design and aesthetics
- Economic solution
- Make for the modern houses.
- Inclination adjustments of the blades
- Aluminium structure
- Quickly assembling
- Several colours
- Assembly unit in horizontal or vertical positioning

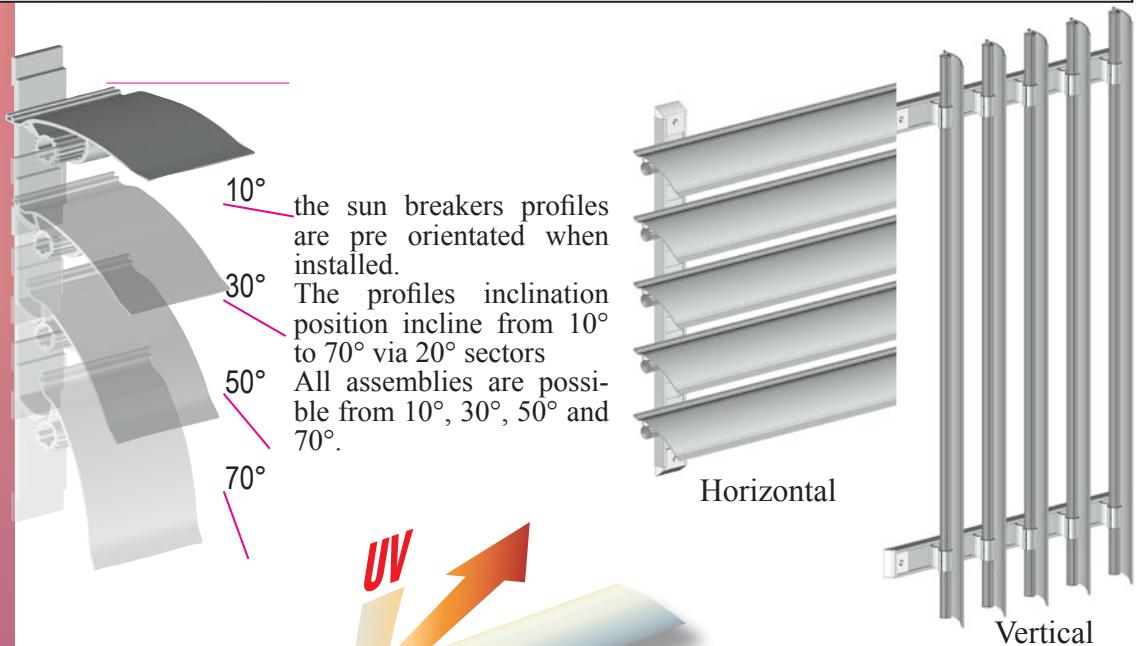


Sun breakers BSOFF 135



Maximum dimensions
Length: 3.00 m
Height: 3.00m

Outside wall installation
vertically or horizontally
Finishing anodized or
powder coated



10° the sun breakers profiles are pre orientated when installed.
30° The profiles inclination position incline from 10° to 70° via 20° sectors
50° All assemblies are possible from 10°, 30°, 50° and 70°.
70°

Horizontal

Vertical

Like the louver shutters, the sun breakers stop the sun's rays, preserve intimacy following the orientation and assures natural ventilation between the profiles.

